

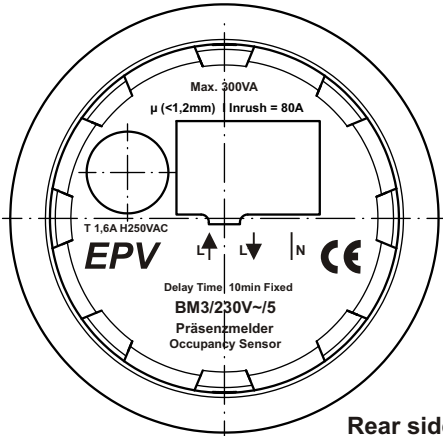


Ceiling Occupancy Sensor Manual

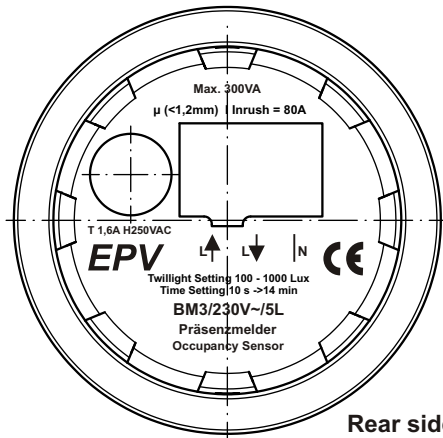
BM3-230V~/5, BM3-230V~/5L and BM3-230V~/10 Terminal assignment

Technical Specification

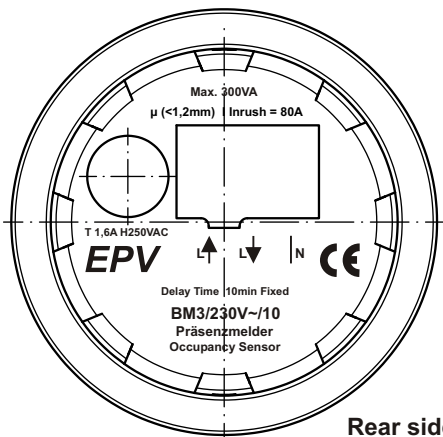
Supply voltage	230V/50Hz
Load	see device print
Sensor reach	/5 and /5L max.5m, /10 max.10m
Ambient temperature	0 -50°C (Indoor)
Connection	0,08 - 2,5mm ² AWG 28 - 12



Rear side
BM3/230V~/5



Rear side
BM3/230V~/5L



Rear side
BM3/230V~/10

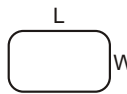
Settings

BM3-230V~/5L



**Potentiometer
Twilight setting 100-1000Lux**

Select the light level above which the movement sensing is deactivated. Adjustment in direction (-) causes a cutoff at lower light level, adjustment in direction (+) a cutoff at higher light values. If the available daylightlevel exceeds the set value when the artificial light is on, the movement sensor is deactivated and the artificial light will be switched off after the set delay time (see below).



The alignment of the **rectangular observation area** is indicated on the front side by opposite marking. For observation area dimension please refer to table on second page.

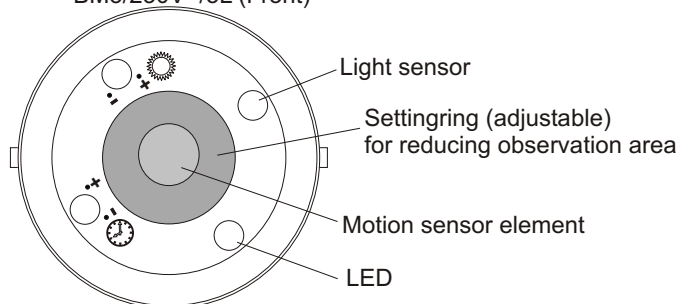


**Potentiometer
Delay time 10s to 14 minutes**

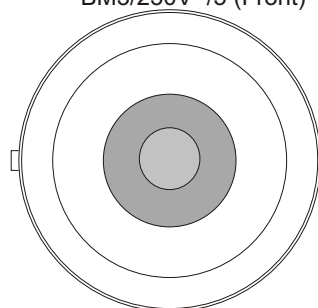
Select the delay time before light is switched-off after no more movement is detected.

For the type BM3/230V~/5 and /10 (no twilight switch) the movement sensor is always active independent of daylight level. The switch-off delay time is fixed to ca. 10 min. Typical applications for these sensors are lavatories / storage rooms etc. with little or no day light.

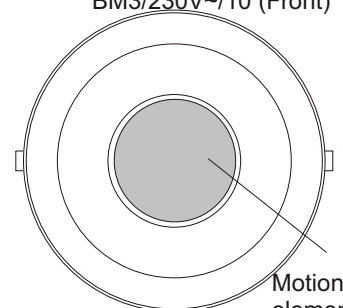
BM3/230V~/5L (Front)



BM3/230V~/5 (Front)



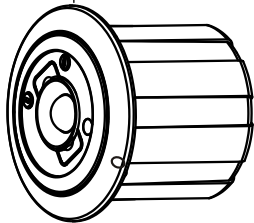
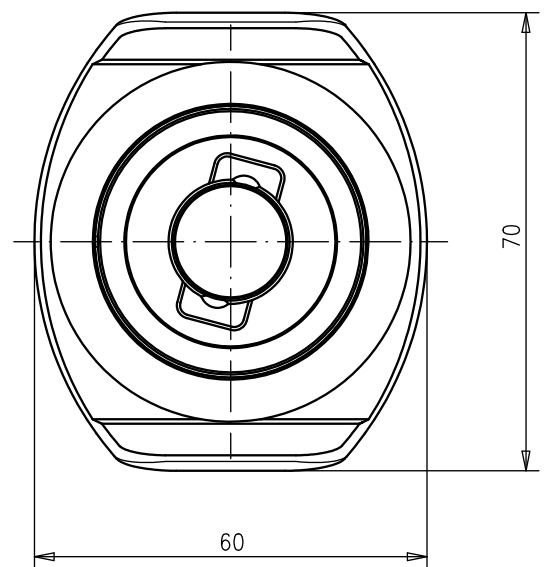
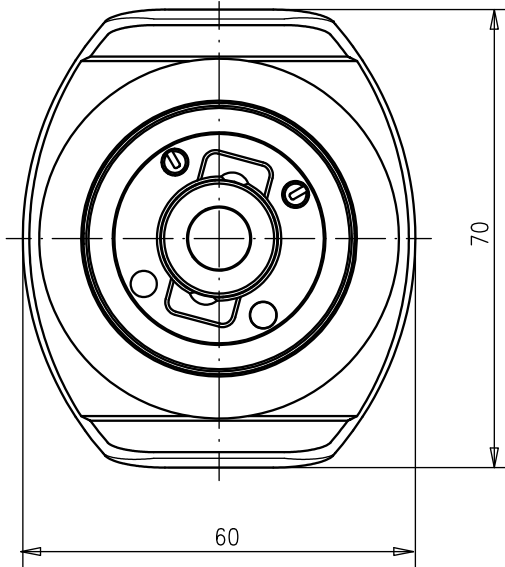
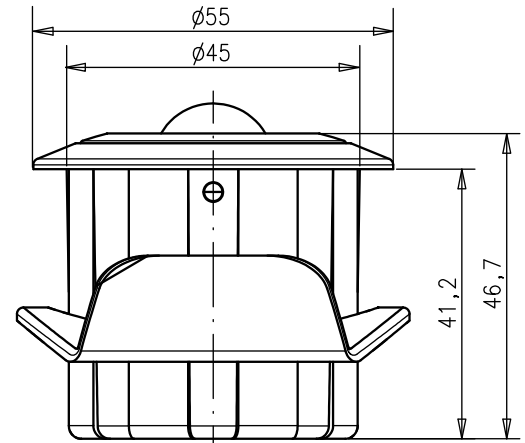
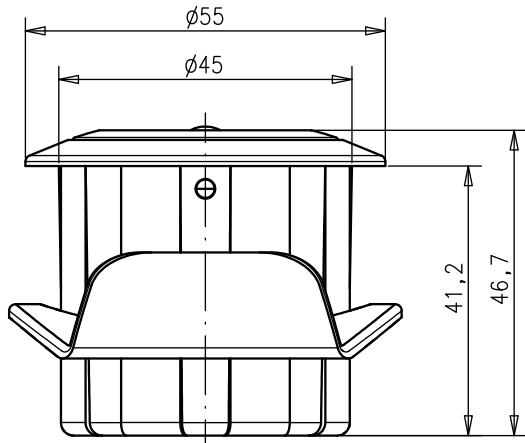
BM3/230V~/10 (Front)



Installation by qualified Electricians only!

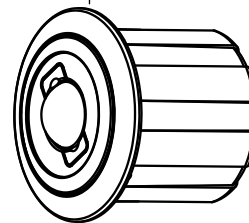
Please note:

Do not mount the sensor in the direct light of the lamp. When setting the lightlevel threshold consider the output of the lamp: the switching level needs to be **higher** than the Lux-level which is achieved **when the lamps are on and there is no ambient light**. Otherwise the lamps will turn off again once the delay time is over. When using with fluorescent lamps the recommended delay time is 10 minutes or more. Check fluorescent lamps and electronic transformers for their suitability for use with Occupancy Sensing before installation (Starting behaviour, switching cycles, burn-in durations, etc.) More details at www.evecto.com



BM3/230V~/5L

Max. permissible ceiling height 5 m, but beyond a ceiling height of 3,2 m there is no extension of the observation area.



BM3/230V~/10

Max. permissible ceiling height 10 m, but beyond a ceiling height of 6,25 m there is no extension of the observation area.

Observation Area

Ceiling height (m)	W(m)	L(m)
1,9	4,30	5,37
2	4,53	5,65
2,2	4,98	6,21
2,1	4,75	5,93
2,2	4,98	6,21
2,3	5,21	6,5
2,4	5,43	6,78
2,5	5,66	7,06
2,6	5,89	7,34
2,7	6,11	7,62
2,8	6,34	7,91
2,9	6,57	8,19
3	6,79	8,47
3,1	7,02	8,75
3,2	7,24	9,04

Observation Area

Ceiling height (m)	W (m)	L(m)
2,6	6,24	7,8
2,7	6,48	8,1
2,8	6,72	8,4
2,9	6,96	8,7
3,0	7,20	9,0
3,1	7,44	9,3
3,2	7,68	9,6
3,3	7,92	9,9
3,4	8,16	10,2
3,5	8,40	10,5
3,6	8,64	10,8
3,7	8,88	11,1
3,8	9,12	11,4
3,9	9,36	11,7
4,0	9,60	12,0
4,25	10,20	12,75
4,5	10,80	13,5
4,75	11,40	14,25
5,0	12,00	15,0
5,25	12,60	15,75
5,5	13,20	15,75
5,75	13,80	15,75
6,0	14,40	15,75
6,25	15,00	15,75